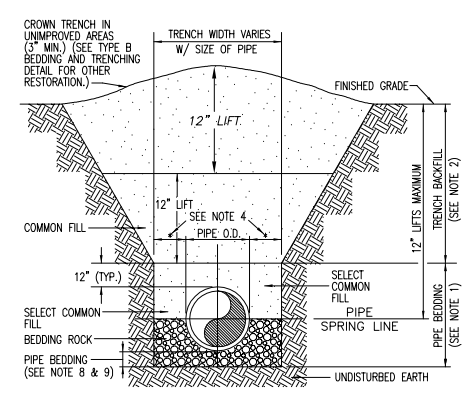
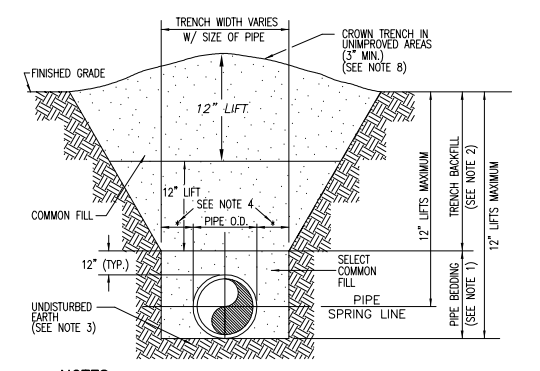


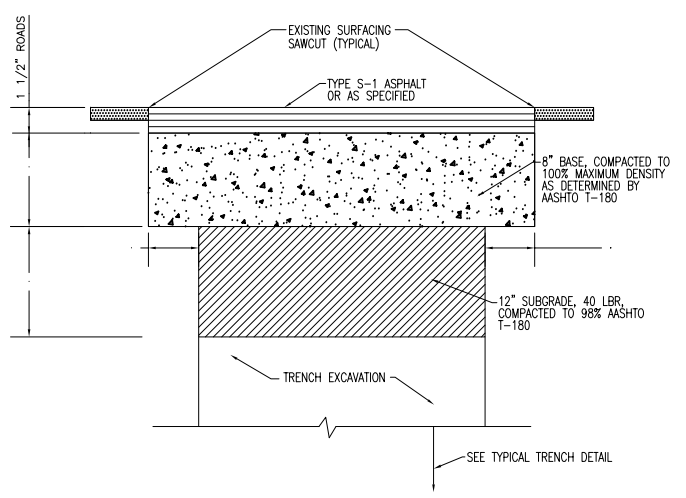
TYPICAL TRENCH EXCAVATION AND PAVEMENT REPLACEMENT
DETAIL No. III-1



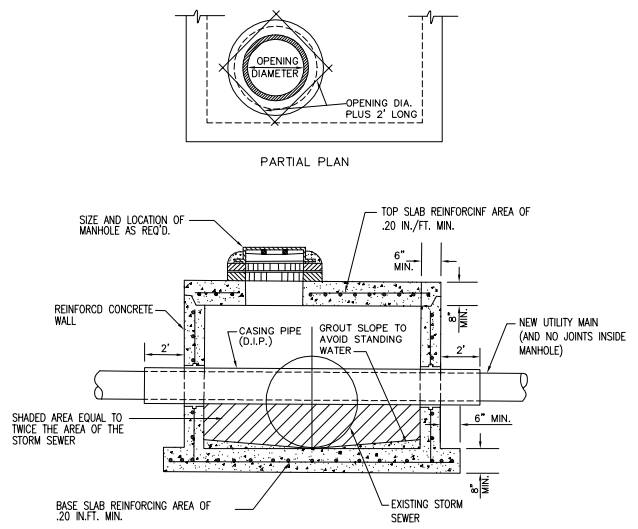
TYPE A BEDDING AND TRENCHING DETAIL
DETAIL No. III-2



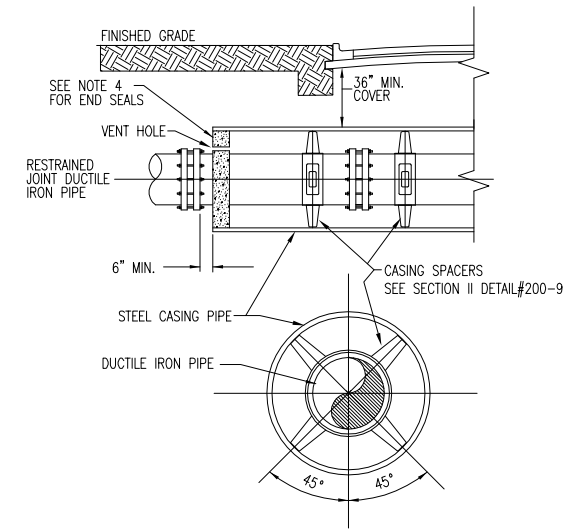
TYPE B BEDDING AND TRENCHING DETAIL
DETAIL No. III-3



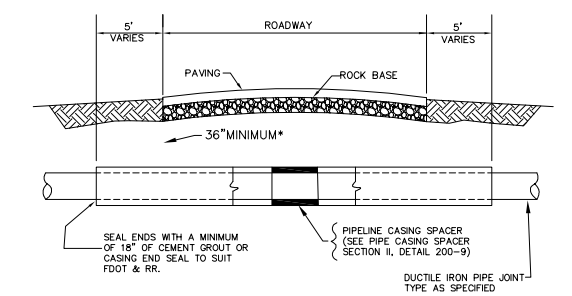
PAVEMENT REPLACEMENT DETAIL
DETAIL No. III-14



CONFLICT MANHOLE DETAIL
DETAIL No. III-5



BORING & JACKING DETAIL
DETAIL No. III-6



NOMINAL PIPE SIZE	*STEEL CASING	*THICKNESS SCHEDULE
4"	12"	375
6"	16"	375
8"	18"	375
10"	20"	375
12"	24"	375
14"	24"	375
16"	30"	375
18"	30"	375
20"	36"	375
24"	42"	500
30"	48"	500
36"	54"	500
42"	60"	500
48"	72"	500

* INDICATES A MINIMUM, TO BE INCREASED TO SUIT D.O.T. AND RAILROAD PERMIT REQUIREMENTS OR TYPE OF RESTRAINED JOINT TO BE USED.

CASING INSTALLATION CHART
DETAIL No. III-7

SURVEY BY:
F.B. NO.:
PGS.:
DESIGN BY:
PROJECT ENGR.:
CHECKED BY:
DATE:

CITRUS COUNTY
DEPARTMENT OF WATER RESOURCES
UTILITIES DIVISION

1300 S. LECANTO HWY.
LECANTO, FLORIDA 34461
(352) 527-7650

NO.	DATE	REVISION	APP'D. BY
0	7/23/04	ORIGINAL ISSUE DATE	

AUTHORIZED BY:

DATE: _____

REGISTERED ENGINEER NO. _____
STATE OF FLORIDA
DATE: _____

TYPICAL DETAILS

SCALE: _____
DATE: _____
PLAN SET:
FILE NAME:
SEC xx TWP:xx RGE:xx
SHEET DT-2