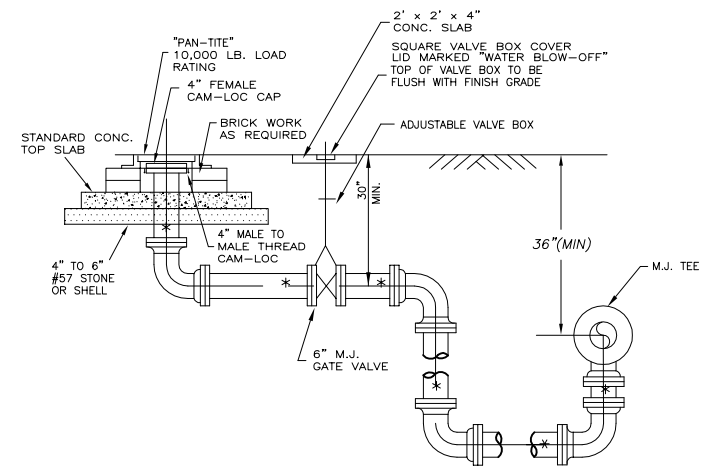


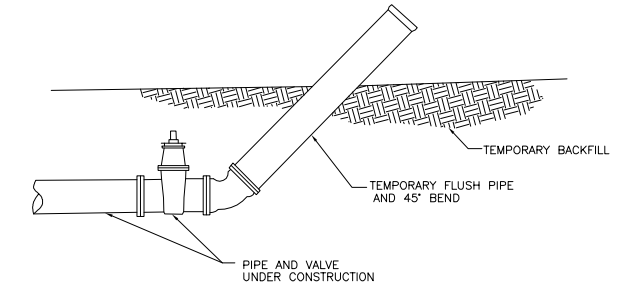
NOTES:
1. BRONZE IDENTIFICATION DISC SHALL BE REQUIRED FOR ALL VALVES 4" AND LARGER, OR AS REQUIRED BY THE U.D. FOR CRITICAL OFFSITE VALVES.
2. VALVE COLLAR DIMENSIONS MAY BE REDUCED TO 18" x 18" x 4" WHEN THE BRONZE IDENTIFICATION DISC IS NOT REQUIRED (AS DETERMINED BY THE COUNTY).

VALVE AND COLLAR DETAIL
DETAIL No.IV-17



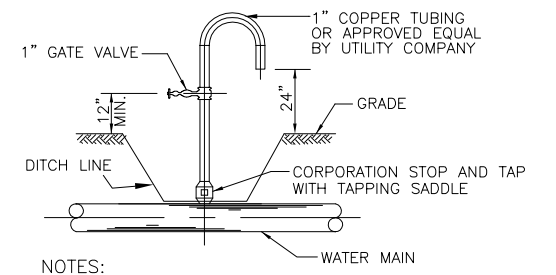
NOTE: RESTRAINED JOINTS FOR ALL 6" PIPES
* 6" DIA. CONNECTING PIECE WITH INTEGRALLY CAST M.J. GLAND ON ONE END - D.I. ROTATABLE M.J. GLAND ON OTHER END.

IN LINE BLOW-OFF DETAIL
DETAIL No.IV-19



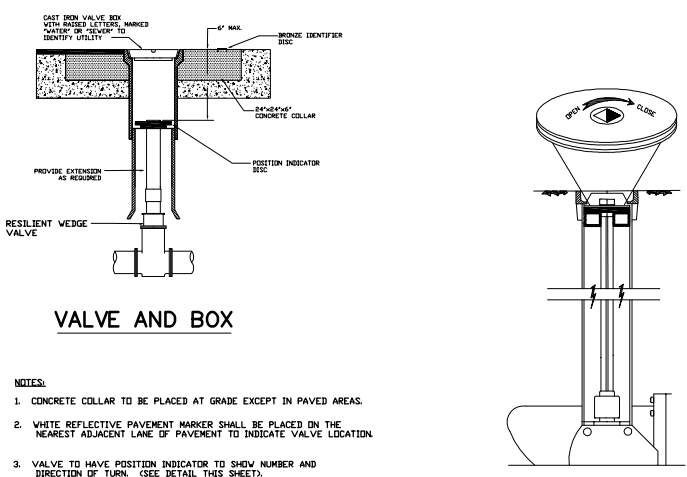
NOTES:
1. UPON COMPLETION OF THE PIPE INSTALLATION FOR ANY SECTION, THE MAINS SHALL BE CANNON FLUSHED TO REMOVE DIRT AND ANY OTHER FOREIGN MATTER BY ACHIEVING A MINIMUM VELOCITY OF 2.5 FEET PER SECOND IN THE PIPE. MAINS MAY BE EITHER TEMPORARILY LAID ABOVE GROUND OR TEMPORARILY LAID UNDER GROUND. TEMPORARY FITTINGS, PIPE, ETC. MAY BE USED TO FACILITATE CANNON FLUSHING.
2. INSTALL A 45° BEND AND ASSOCIATED PIPING AS SHOWN TO DIRECT THE FLUSHING WATER AWAY FROM THE IMMEDIATE WORK AREA AND EXERCISE CARE SO AS NOT TO ENSURE THAT THE WATER USED IN FLUSHING DOES CAUSE A NUISANCE OR INFLECT PROPERTY DAMAGE.
3. BENDS AND PIPING SHALL BE THE SAME SIZE AS THE LINE TO BE FLUSHED.
4. PRIOR TO THE ACTUAL LINE FLUSHING OPERATION, THE CONTRACTOR SHALL PROPERLY NOTIFY THE U.D. INSPECTOR OF SUCH INTENDED WATER USE.
5. NO EXISTING VALVES SHALL BE TURNED ON OR OFF, EXCEPT BY AUTHORIZED U.D. PERSONNEL.
6. FLUSHING SHALL NOT BE ACCOMPLISHED WITHOUT THE ACTUAL PRESENCE OF THE U.D. INSPECTOR.
7. AFTER THE LINE UNDER CONSTRUCTION HAS BEEN SUCCESSFULLY FLUSHED, THE CONTRACTOR SHALL REMOVE THE TEMPORARY PIPING ARRANGEMENT AND PROCEED WITH THE REMAINING CONSTRUCTION AS SPECIFIED.
8. ALL PIPING SHALL BE MECHANICALLY RESTRAINED IN ACCORDANCE WITH U.D. STANDARDS. THE NUMBER OF PIPE LENGTHS TO BE RESTRAINED SHALL BE PER MANUFACTURERS RECOMMENDATION.
9. SEE SPECIFICATIONS, SECTION VII, SUB-SECTION 350, ARTICLE 3.6.1.2.

CANNON FLUSHING DETAIL
DETAIL No.IV-20



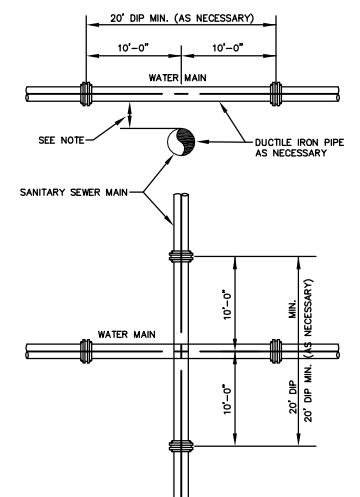
NOTES:
1. SAMPLE POINTS SHALL BE LOCATED AND LATER REMOVED AND BACKFILLED AS REQUIRED BY HEALTH DEPARTMENT
2. A CORPORATION STOP SHALL BE INSTALLED WITH A LENGTH OF 1" COPPER TUBING EXTENDED ABOVE THE GROUND. THE TUBING SHALL BE INSTALLED WITH A 180° BEND.
3. A REPRESENTATIVE OF THE UTILITIES DEPT. MUST BE AT THE CHLORINATION AND 24 HOURS LATER TO CHECK RESIDUAL CHLORINE IN THE LINE.

BACTERIOLOGICAL SAMPLING POINT
DETAIL No. IV-21



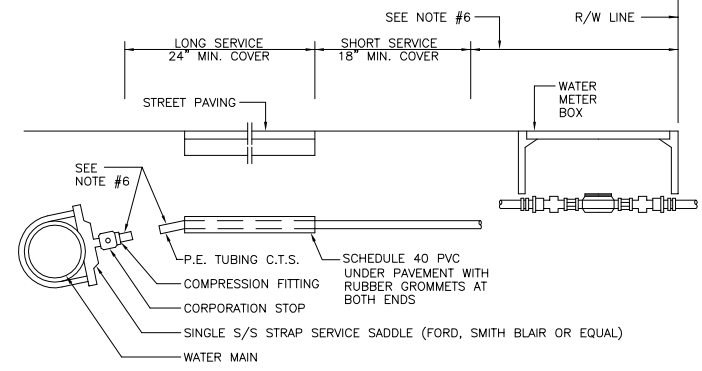
NOTES:
1. CONCRETE COLLAR TO BE PLACED AT GRADE EXCEPT IN PAVED AREAS.
2. WHITE REFLECTIVE PAVEMENT MARKER SHALL BE PLACED ON THE NEAREST ADJACENT LANE OF PAVEMENT TO INDICATE VALVE LOCATION.
3. VALVE TO HAVE POSITION INDICATOR TO SHOW NUMBER AND DIRECTION OF TURN. (SEE DETAIL THIS SHEET).
4. VALVES LOCATED AT END OF LINES ARE TO BE RESTRAINED.
5. COVER TO BE PAINTED BLUE FOR WATER AND GREEN FOR SEWER.
6. VALVE BOX SHALL BE 3 PIECE TYPE AS MANUFACTURED BY TYLER UNION.

VALVE & BOX DETAIL
DETAIL No.IV-16



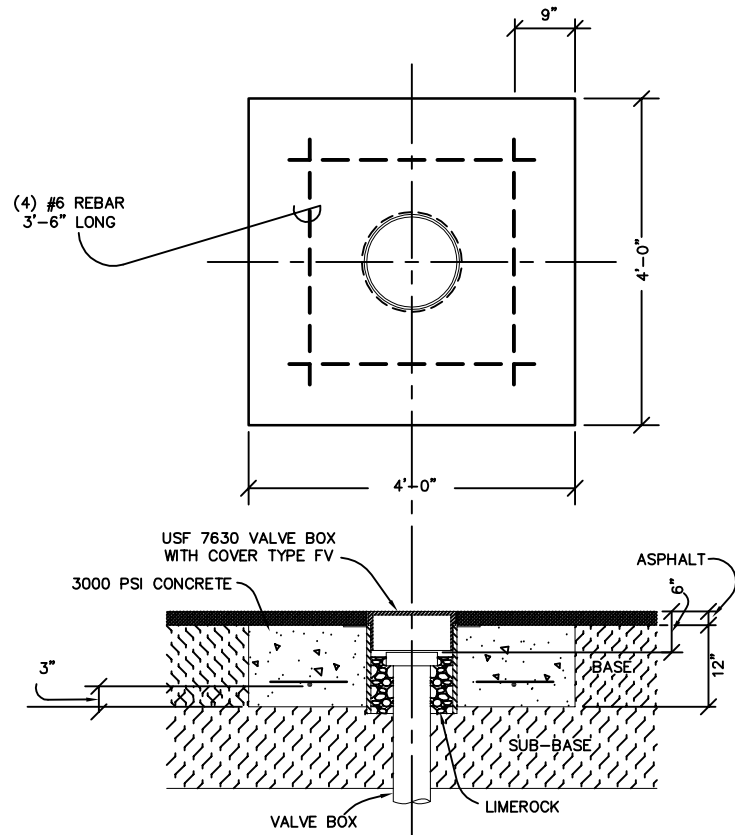
NOTES:
1. A WATERMAIN SHOULD CROSS OVER CONFLICT PIPES WHEREVER POSSIBLE, MAINTAINING 30" COVER IN UNPAVED AREAS, 36" IN PAVED AREAS AND 12" SEPARATION AS MINIMUMS.
2. ANY NEW OR RELOCATED WATER MAINS THAT CROSS ANY GRAVITY OR VACUUM-TYPE SANITARY SEWER, STORM SEWER, PRESSURE-TYPE SANITARY SEWER, WASTEWATER MAIN, STORMWATER FORCEMAIN, OR RECLAIMED WATER MAIN SHALL CROSS ABOVE (PREFERRED) SUCH PIPELINES WITH A MINIMUM VERTICAL DISTANCE OF 12 INCHES BETWEEN THE OUTSIDE OF THE WATER MAINS AND THE OUTSIDE OF SUCH PIPELINES. SUCH CROSSINGS SHALL BE ARRANGED SO THAT ALL PIPE JOINTS ARE EQUIDISTANT FROM THE POINT OF CROSSING WITH NO LESS THAN TEN FEET BETWEEN TWO JOINTS. SEE DETAIL III-24 FOR EXCEPTIONS.
3. ALL CROSSINGS SHALL CONFORM TO DEP STANDARD SEPARATION REQUIREMENTS.
4. SEE SECTION 350, ARTICLE 3.4 FOR ADDITIONAL DETAILS.

WATER MAIN SANITARY SEWER CONFLICT DETAIL
DETAIL No.IV-18
REVISED JULY 2004



NOTES:
1. SUCCESSIVE TAPS INTO THE WATER MAIN SHALL BE SPACED NOT LESS THAN 18" APART ON CENTER AND MINIMUM OF 18" FROM JOINTS AND FITTINGS.
2. SERVICE PIPE SHALL BE THE SAME SIZE AS THE WATER METER USED EXCEPT THAT NO SERVICE PIPE SHALL BE SMALLER THAN 1".
3. CASING PIPE SHALL HAVE A DIAMETER AT LEAST 1" GREATER THAN SERVICE LINE DIAMETER.
4. ALL CASING PIPE SHALL EXTEND A MIN. OF 2' BEYOND THE EDGE OF PAVED STREETS.
5. WATER SERVICE TO BE P.E. CONFORMING TO A.S.T.M. 3408, ENDOT INDUSTRIES, INC. "ENDOPURE", OR EQUAL.
6. FOR 1" SERVICE LINES, THE MINIMUM RADIUS SHALL BE 14", FOR ALL OTHER SERVICE LINES, THE MINIMUM RADIUS SHALL BE 21".

WATER MAIN SERVICE CONNECTION DETAIL
DETAIL No. IV-22 N.T.S.
REVISED NOV. 2005



IN PAVEMENT VALVE BOX DETAIL
DETAIL No. IV-23
FEBRUARY 05, 2007 N.T.S.

SURVEY BY:
F.B. NO.:
PGS.:
DESIGN BY:
PROJECT ENGR.:
CHECKED BY:
DATE:

CITRUS COUNTY
DEPARTMENT OF WATER RESOURCES
UTILITIES DIVISION
1300 S. LECANTO HWY.
LECANTO, FLORIDA 34461
(352) 527-7650

NO.	DATE	REVISION	APP'D. BY
1	2/05/07	ADDED DETAIL IV-23	
0	7/23/04	ORIGINAL ISSUE DATE	

AUTHORIZED BY:

DATE: _____

REGISTERED ENGINEER NO. _____
STATE OF FLORIDA
DATE: _____

TYPICAL DETAILS

SCALE: _____
DATE: _____
PLAN SET: _____
FILE NAME: _____
SEC xx TWP:xx RGE:xx
SHEET DT-8