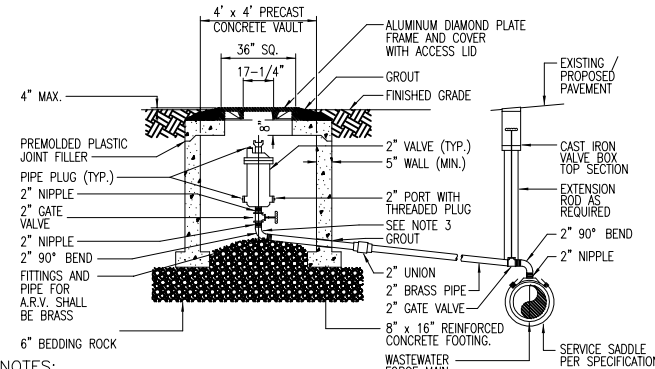


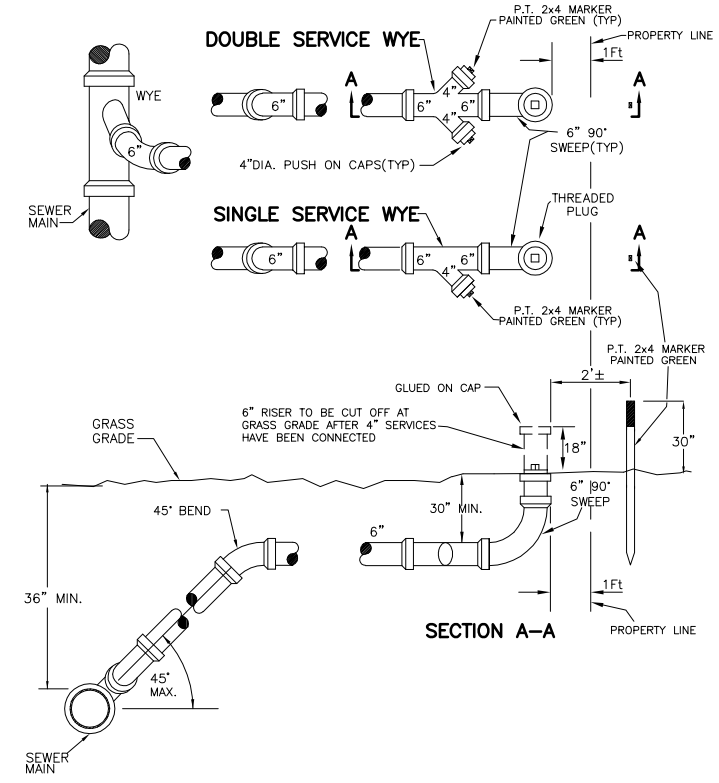
- NOTES:**
1. ABOVE DETAIL IS BASED ON 2" COMBINATION AIR/VACUUM RELEASE VALVE. CHANGE PIPE AND FITTINGS ACCORDINGLY FOR OTHER VALVE SIZES AND TYPES. VALVE SIZES TO BE DETERMINED BY THE ENGINEER AND APPROVED BY THE COUNTY PRIOR TO INSTALLATION.
 2. THE MINIMUM DIMENSION FROM TOP OF PIPE TO FINISHED GRADE SHALL BE 4.0 FEET.

WASTEWATER AIR RELEASE VALVE
DETAIL No.V-1

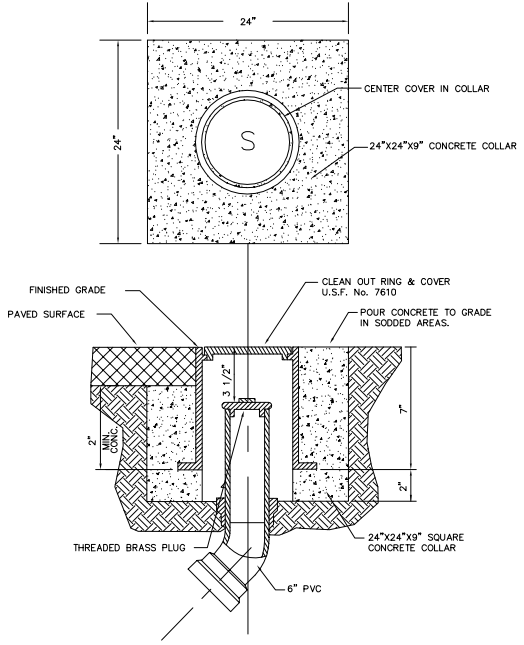


- NOTES:**
1. ABOVE DETAIL IS BASED ON 2" COMBINATION AIR/VACUUM RELEASE VALVE. CHANGE PIPE AND FITTINGS ACCORDINGLY FOR OTHER VALVE SIZES AND TYPES. VALVE SIZES TO BE DETERMINED BY THE ENGINEER AND APPROVED BY THE COUNTY PRIOR TO INSTALLATION.
 2. THE MINIMUM DIMENSION FROM TOP OF PIPE TO FINISHED GRADE SHALL BE 4.0 FEET.

OFFSET WASTEWATER AIR RELEASE VALVE
DETAIL No.V-2

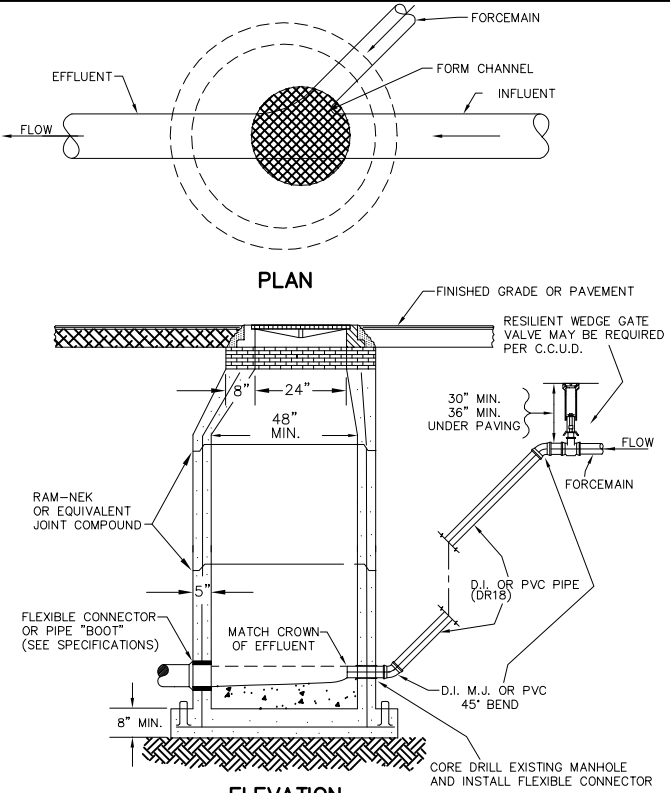


SEWER SERVICE DETAIL
DETAIL No.V-3
REVISED: APRIL 2004



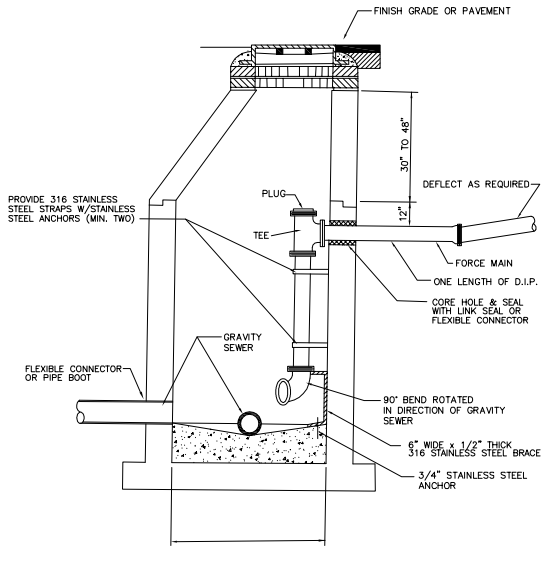
- NOTES:**
1. CLEANOUTS TO BE LOCATED IN GRASS AREA WHENEVER POSSIBLE.
 2. CLEANOUTS SHALL NOT BE INSTALLED IN TRAFFIC LANES OR AREAS UNDER HEAVY TRAFFIC LOADS.
 3. THE COVER TO BE MARKED "S".

TYPICAL SEWER SERVICE CLEAN-OUT DETAIL
DETAIL No.V-4



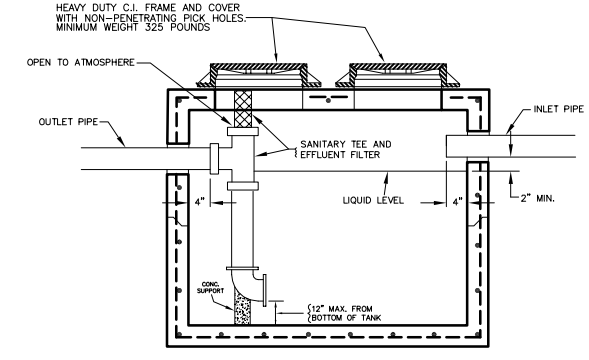
- NOTES:**
1. SEE MANHOLE NOTES FOR STANDARD MANHOLE
 2. FORCEMAIN TIE-IN SHALL NOT BE AT SECTION JOINTS
 3. SEE SUBSECTION 427 FOR INTERIOR & EXTERIOR LINING/COATINGS.

FORCEMAIN TIE-IN AT MANHOLE
DETAIL No.V-5



- NOTES:**
1. SEE MANHOLE NOTES FOR STANDARD MANHOLE
 2. FORCE MAIN TIE-IN SHALL NOT BE AT SECTION JOINTS.
 3. SEE SUBSECTION 427 FOR INTERIOR & EXTERIOR LINING/COATINGS
 4. THIS METHOD OF TIE-IN REQUIRES PRIOR APPROVAL OF THE UTILITIES DIVISION AND MAY BE APPROVED ONLY WHERE NON-SEPTIC SEWAGE IS DISCHARGED.

ALTERNATE FORCEMAIN TIE-IN AT MANHOLE
DETAIL No.V-6

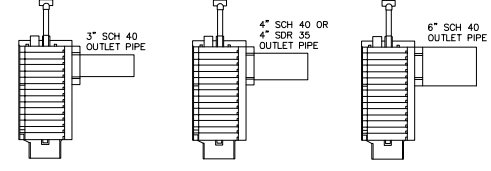


- NOTES:**
1. ALL PIPING SHALL BE A MINIMUM OF 4" PVC.
 2. PIPING SHALL BE INSTALLED USING A CONCRETE MANHOLE ADAPTER.
 3. SANITARY "T" OUTLET SHALL BE INSTALLED 4" INSIDE OF WALL.
 4. TANK SHALL BE A MINIMUM OF 750 GALLONS, AND A MAXIMUM OF 1250 GALLONS.
 5. TANK SHALL BE TRAFFIC BEARING AND CONCRETE SHALL COMPLY WITH ASTM C 478, LATEST REVISION.
 6. WALLS & BOTTOM SLABS SHALL BE MINIMUM 4" THICK REINFORCED CONCRETE.
 7. TOP SLAB SHALL BE A MINIMUM 6" THICK REINFORCED CONCRETE.
 8. SECTIONS SHALL BE JOINED AND SEALED WITH MINIMUM 1" "RAM-NEK" SEALER OR EQUIVALENT TO FORM A WATER TIGHT SEAL.
 9. RISER JOINTS SHALL COMPLY WITH ASTM C 443, LATEST REVISION.
 10. EFFLUENT FILTER SHALL BE SIZED BY THE ENGINEER AND INSTALLED AT LOCATIONS STIPULATED BY THE U.D. ZABEL A300-B SERIES OR APPROVED EQUAL.
 11. WHEN THE REQUIRED EFFECTIVE CAPACITY OF THE TANK IS GREATER THAN 1250 GALLONS, INSTALLATION OF MULTIPLE GREASE TRAPS IN SERIES IS REQUIRED.
 12. GREASE TRAP DESIGN SHALL CONFORM TO F.A.G. 64E-6.013 (6)
 13. IF THE FACILITIES INCLUDE FOOD PREPARATION AND LAUNDRY SERVICES, THE GREASE TRAP SHALL BE LARGE ENOUGH TO COOL THE SOLUTIONS SO GREASE IS NOT PASSED THROUGH IT.

GREASE, OIL AND SAND INTERCEPTOR
DETAIL No.V-7
REVISED NOV. 2005

MODEL	DIAMETER	HEIGHT	FILTRATION SURFACE	SETTLING AREA	LIQUAL FILTER SURFACE	INITIAL FEED AND MEAS.	GALLONS PER DAY
A300-BX12	8"	11.5"	1/32"	246 IN ²	664 IN ²	39	800
A300-BX18	8"	18.5"	1/32"	292 IN ²	1,329 IN ²	78	1200
A300-BX26	8"	25.5"	1/32"	773 IN ²	2,088 IN ²	123	1800
A300-BX32	8"	32.5"	1/32"	1,019 IN ²	2,753 IN ²	162	2400

MULTIPLE FILTERS MAY BE INSTALLED TO HANDLE LARGER FLOWS.
OUTLET HUB ACCEPTS 3", 4" OR 6" PIPE.
EXTRA SUPPORT FOR THE 26" AND 32" LONG MODELS MAY BE ACHIEVED BY EXTENDING A 4" SUPPORT PIPE FROM THE REDUCER HUB TO THE BOTTOM OF THE TANK.



ZABEL A300-B SERIES OR APPROVED EQUAL.

GREASE INTERCEPTOR AND SPECIAL APPLICATIONS FILTER
DETAIL No.V-8

CITRUS COUNTY DEPARTMENT OF WATER RESOURCES UTILITIES DIVISION
1300 S. LECANTO HWY. LECANTO, FLORIDA 34461 (352) 527-7650

NO.	DATE	REVISION	APP'D. BY
0	7/23/04	ORIGINAL ISSUE DATE	

AUTHORIZED BY: _____
DATE: _____

REGISTERED ENGINEER NO. _____
STATE OF FLORIDA
DATE: _____

TYPICAL DETAILS

SCALE: _____
DATE: _____
PLAN SET: _____
FILE NAME: _____
SEC XX TWP: XX RGE: XX
SHEET DT-9